

OPEN ENROLLMENT

# Manufacturing Black Belt

Agents of Change in Your Six Sigma Process



Six Sigma Qualtec

## Profile of a Leader

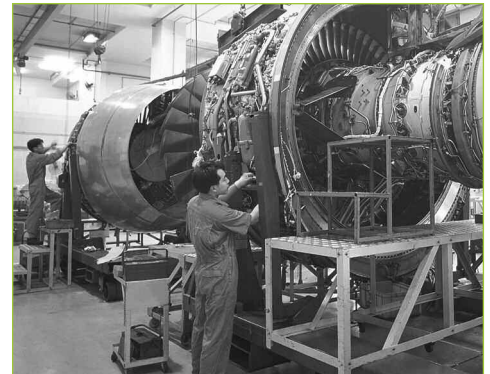
The manufacturing environment requires specific technical problem solving and analytical tools. Six Sigma Qualtec's **Manufacturing Black Belt Certification** is designed to meet those needs. Instruction emphasizes application of skills, requiring candidates to successfully complete a "real world" project while participating in classroom sessions.

## Black Belt Training

The key "change agents" in the Six Sigma process, Black Belts are instructed in specific technical problem solving and analytical tools. Training consists of four phases – Define/Measure, Analyze, Improve and Control (DMAIC). During each phase, the candidate receives one week of training followed by four weeks of knowledge application on the Champion-selected project. Upon completion of training, the Black Belt not only has developed superior problem-solving skills that can be applied on problems at the company, but has also completed a project that yields significant bottom line savings.

## The Program

**Manufacturing Black Belt Certification** is a 4-month course involving 20 days of classroom training. Following each one-week course, 4 weeks are devoted to a "real-world" project-driven application in the workplace. Classroom work begins with Six Sigma Qualtec's Ground School, which covers the fundamentals. At this stage, the project is defined that will be the focus of the Black Belt Training process. Subsequent classroom modules provide intensive instruction on each of the five phases of Six Sigma – Define, Measure, Analyze, Improve and Control (DMAIC) – in which candidates follow a Plan-Train-Apply-Support-Review (PTASR) model. The final deliverable includes data on project results as well as a plan for sustainability of manufacturing improvements.



## MANUFACTURING BLACK BELT TRAINING

Reap the rewards  
when you learn to:

- Manage Decisions with Data
- Optimize Manufacturing Processes
- Analyze Production Line Productivity
- Manage Complex Workflow Redesign Projects
- Master Measurement and Statistical Process Control

## Immediate Bottom Line Results

Typically, the entire Black Belt training investment can be justified by results from the first project. **The median return on each Qualtec trained Black Belt is \$100,000 per project.**

# REGISTRATION FORM

# Manufacturing Black Belt

Agents of Change in Your Six Sigma Process



Six Sigma Qualtec

## Black Belt Training Registration

Please select a seminar date and a support option.  
Submit a separate form for each person attending.

### Registration Information

Name \_\_\_\_\_  
Title \_\_\_\_\_  
Company \_\_\_\_\_  
Address \_\_\_\_\_  
City \_\_\_\_\_ State \_\_\_\_\_ Zip \_\_\_\_\_  
Telephone \_\_\_\_\_ Fax \_\_\_\_\_  
E-Mail \_\_\_\_\_

### Black Belt Support Options: *(Select one)*

Six Sigma Qualtec recommends that Black Belt candidates elect a Master Black Belt support program that provides guidance through the four training weeks.

- Basic Support** – Eight support sessions delivered over the phone and/or computer connections. Each session is conducted in two-hour segments after each training week. The fee for this program is \$6,000, with additional support sessions available at \$750 per session. Additional charges may apply for the use of live computer connections.
- Preferred Support** – Four days of onsite project support (one full-day session will be provided after each training week). The fee for this program is \$12,000 plus actual travel expenses. Additional support days are available at \$3000 per day.
- No Support**

### Payment Information

Program Fee:	@ \$11,000
Support Option:	+ _____
Total Fee:	= _____

#### Payment Method:

- Check Enclosed  
 American Express  
 MasterCard  
 Visa

Card Number \_\_\_\_\_ Expiration \_\_\_\_\_  
Cardholder \_\_\_\_\_ Signature \_\_\_\_\_

**Cancellations:** Attendees canceling 7-30 days prior to the event will be charged a \$250 processing fee. Attendees canceling less than 7 days prior to the event will be charged the full seminar fee.

**Disclaimer:** SSQ retains the right to move, reschedule or change the class at any time. Additional expenses include travel to attend the training.

**Logistics:** After your registration form is processed, you will receive a confirmation letter with the specifics of the event. Participants are responsible for making their own travel and hotel arrangements.



## 2006-2007 SEMINAR

*Economically train key personnel and have them delivering results in the first quarter!*

### Manufacturing Black Belt

#### TEMPE, AZ

October 16-20  
Define

November 13-17  
Measure

December 11-15  
Analyze

January 29-February 1  
Improve/Control

Hours are 8:00 a.m. - 5:00 p.m.

For information on this training program, call 800-247-9871 or email [info@ssqi.com](mailto:info@ssqi.com)

To register complete a registration form and fax back to 480-586-2586

**Fax complete registration forms to 480-586-2586**