



Make a Difference in Your Organization

Black Belt Leaders are the key change agents within an organization, facilitating improvement, leading successful teams and accelerating results-oriented initiatives.

Six Sigma Qualtec's Black Belt Certification Training provides the analytical tools and strategic problem solving skills to bring results in a service environment. With a proven track record and hundreds of Black Belts certified worldwide, SSQ instructors provide focused training, emphasizing application of skills learned in classroom sessions, combined with a "real world" project.

The Program

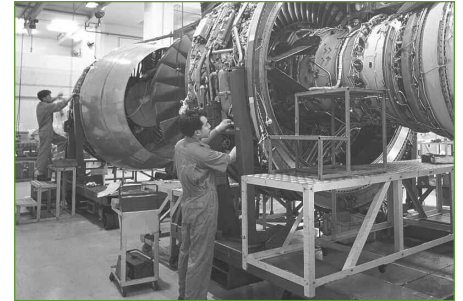
Black Belt Certification takes candidates through a proven, step-by-step training course based on the transfer of knowledge and process skills that lead to improved customer satisfaction, increased profit margins, shortened cycle times and reduced costs. Courses are designed to include sophisticated adult learning theory and no-nonsense evaluation of learning success, while constructing the framework for true cultural change within an organization.

Black Belt Certification is a 4-month course involving 20 days of classroom training.

Following each one-week course, 4 weeks are devoted to a "real-world" project-driven application in the workplace. Classroom work begins with Six Sigma Qualtec's Ground School, which covers the fundamentals. At this stage, the project is defined that will be the focus of the Black Belt Training process. Subsequent classroom modules provide intensive instruction on each of the five phases of Six Sigma – Define, Measure, Analyze, Improve and Control (DMAIC) – in which candidates follow a Plan-Train-Apply-Support-Review (PTASR) model. The final deliverable includes data on project results as well as a plan for sustainability of manufacturing improvements.

Immediate Bottom Line Results

Upon completion of training, the Black Belt not only has developed superior problem-solving skills that can be immediately applied, but has also completed a project that yields significant bottom line savings. Typically, the entire Black Belt training investment can be justified by results from the first project. **The median return on each Qualtec trained Black Belt is \$100,000 per project.**



With Six Sigma Qualtec's Comprehensive Training, Black Belt Certification Candidates Will:

- Design and Implement Projects that Exceed Customer Expectations
- Use Data to Improve Decision Making Processes
- Reduce Costs and Cycle Time
- Streamline Operations and Increase Profitability
- Manage Complex Workflow Redesign Projects
- Optimize Communication and Training

Services Black Belt

Six Sigma Training That Improves Your Bottom Line



Six Sigma Qualtec

Classroom Training	Each week of classroom training is separated by 4 weeks of project application in your workplace.		By bringing a project from your organization into the classroom, your bottom line will benefit while your Black Belt candidate is in training.	
		Course Modules		Training Agenda
	Week 1	Define & Measure	<ul style="list-style-type: none"> • Six Sigma Overview • Basic Tools and Concepts • Define Existing Processes • Critical Metrics 	
	Week 2	Analyze	<ul style="list-style-type: none"> • Identify Critical Inputs/Outputs • Graphical Analysis • Inferential Statistics • Simulation Modeling 	
	Week 3	Improve	<ul style="list-style-type: none"> • Root Causes • Final Outputs • Corrective Actions 	
Week 4	Control	<ul style="list-style-type: none"> • Optimizing Inputs • Sustaining Improved Performance 		

Support Options

Every Black Belt candidate receives extensive support throughout the training process. This includes on-site visits, assistance and monitoring of the candidate's "real world" project.

Basic Support

8 support sessions delivered over the phone and/or via computer connections in two-hour segments after each training week.

Preferred Support

4 additional days of onsite project support.

Simulation Option

Qualtece also offers a 25 day program that includes a week of simulation modeling.

Our Instructors

Six Sigma Qualtec's training and support services fully equip candidates to achieve and sustain improvements long after certification training is completed. Qualtec Black Belt Instructors are the best of the best, each a Master Black Belt with 10+ years of Six Sigma Training experience in a wide range of business settings. Black Belt candidates are carefully matched with the appropriate mentor, based on industry background and organizational size and structure. This mentoring relationship continues after Black Belt Certification to ensure real world results and includes on-site visits, as well as assistance and monitoring of the Black Belt project.

Enterprise-Wide Deployment: We See the Big Picture

Six Sigma Qualtec is unique in the training industry, providing enterprise-wide training that focuses on overall corporate strategies. An initial assessment is used to map-out specific training and technology needs and to focus implementation on broader corporate objectives. Support continues beyond the training phase, ensuring alignment of all projects and sustainability of process improvements. Qualtec has been involved in building ground-floor process improvement initiatives that have significantly enhanced productivity, efficiency and customer satisfaction at **world-class companies including Nokia, General Electric, Fannie Mae and Owens Corning.**